

MAINTENANCE CAPABILITY



Our maintenance crews ensure an available and reliable drill fleet, essential to keeping mining operations running to schedule.

We provide our clients with a consistently high rig availability, averaging 85% or above.

VALUE FOR CLIENTS

- Sustained high rig availability, consistently greater than 85%
- Complete maintenance program incorporating Predictive Component Replacement models ensure reliable assets
- Reduced unplanned down-time
- Daily, weekly, month-to-date and year-to-date KPI reporting allowing visibility across the fleet
- Fleet incorporates the latest safety features, developed in conjunction with OEM's
- Every rig maintained to first world standards
- Cost-effective components via global supply chain networks
- In-house engineering capability for project-specific solutions

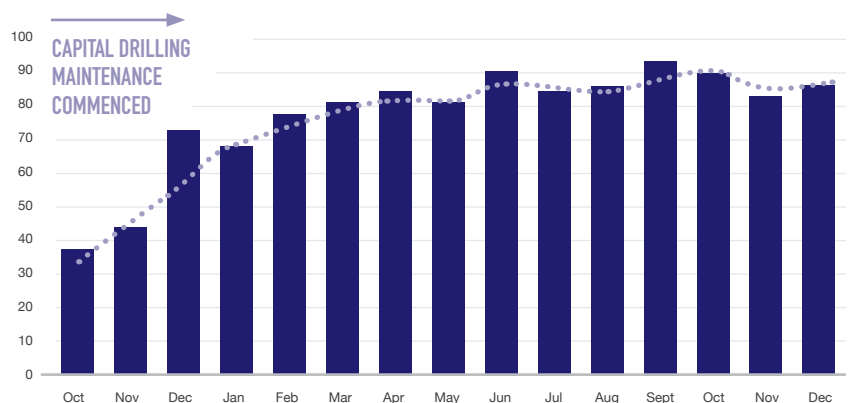
MAINTENANCE CAPABILITY

Our maintenance teams achieve high availability and reliability by focusing on preventative maintenance and optimising the assets performance. As a result, we minimise costs associated with unplanned downtime and subsequent delays in the drill program. We also ensure the latest safety features are installed on the rigs to keep operational personnel safe.

We employ a number of strategies to achieve our consistently high rig availability, including:

- Strong focus on preventative maintenance via service scheduling
- Employing an experienced and dedicated team aligned to our culture of always looking at ways to improve asset performance and safety
- Using on-the-ground knowledge of developing countries to create quality local supply chain networks
- Providing in-house engineering capability including industry-leading specialists for project specific solutions who work closely with OEM's when Change Management on the asset is required
- Establishing fully-equipped workshops at long-term projects
- Pro-actively monitoring fleet trends and address emerging issues via in-house engineering team
- Undertaking regular rig re-builds to maintain a young and productive fleet

FLEET AVAILABILITY MAINTENANCE RESULTS



Capital Drilling trebled fleet availability following its take-over of maintenance management from the OEM (Original Equipment Manufacturer)

Our maintenance crews ensure improved mechanical availability of assets, reduced mean repair times, extended time between failures and increased repair effectiveness.

FOCUS ON PREVENTATIVE MAINTENANCE

All rigs in the fleet follow a servicing schedule monitored by a team of service planners, including daily checks and inspections together with major servicing. This ensures the fleet is maintained and unplanned breakdowns are minimised as the rigs are kept in excellent working order. We also understand the conditions we are operating in to anticipate and address potential problems, ensuring our fleet maintains first world standards across all our developing markets, improving availability and reliability for our clients.

DEVELOPING MARKET EXPERTISE

Operating in developing markets requires an understanding of the unique and specific conditions they present, which can take many years to obtain to operate efficiently. We leverage our substantial experience and on-the-ground knowledge of operating in these markets, particularly across Africa, to develop a broad network of suppliers, allowing us to access components quickly and cost effectively.

Additionally, our team have access to personnel across our vast African operations ensuring a broad knowledge base to assist with problem solving if required.

EXPERIENCED AND DEDICATED TEAM

A critical component of our success is our team – we place great importance on hiring the right people and we actively employ, train and promote local national labour.

Our team will use diagnostics and trend analysis to ensure we are not fixing the same problem repeatedly. We examine the root cause to establish engineering or process changes required to ensure it doesn't happen again. This lowers component replacement costs, especially where they may be unnecessary.

RIG REBUILD CAPABILITY

Our workshops are fully equipped and our teams have the knowledge to complete full rig rebuilds. We strip the rig back to bare metal and re-build it with improved specifications and safety features. We essentially create a brand new rig with all componentry replaced or rebuilt from the ground up.

Rebuilds also incorporate practical solutions identified during use on site and will engineer out the weak points and causes of repetitive down-time occurrences, ensuring the second life of the asset increases safety, utilization and availability. Where required, rebuild teams work closely with OEM's to implement improvement via their Change Management processes.



Rebuilds will incorporate extended decks and walkways to allow better access to components for both operations and maintenance crews.

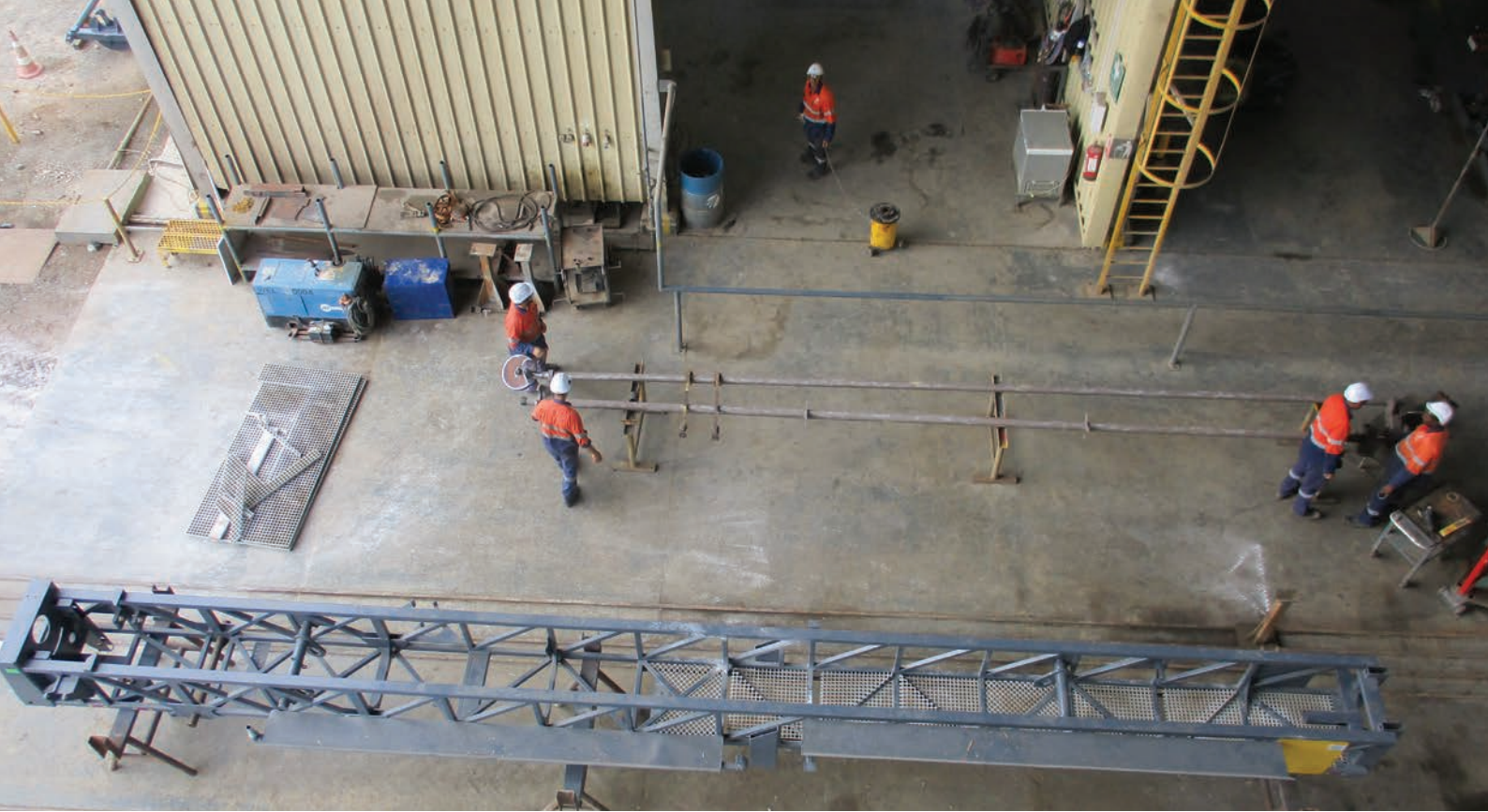
The emergency panel and isolation panel are mounted next to each other to improve rig safety.



Rig rebuild before



Rig rebuild after



CRITICAL BREAKDOWN ALERT PROCEDURE

In the instance a repair takes longer than 72 hours, our Executive Leadership Team (ELT) are alerted and Maintenance Managers, Supply Chain and Logistics partners are immediately engaged to ensure the highest priority is given to finding a resolution quickly.

QUALITY SUPPLY CHAIN

In addition to accessing local suppliers, our company also has long-term relationships with major components manufacturers. We work with specialists who are focussed on the drilling industry, providing better buying capability and in-depth reach across product ranges which ultimately helps deliver cost savings to our clients. These suppliers also provide direct access to key product support personnel to assist with parts expedition or tailored solutions when required. Additionally, we proactively source parts and components using our Predictive Component Replacement models, further enabling more cost-efficient maintenance programs.

IN-HOUSE ENGINEERING CAPABILITY

We employ in-house engineering specialists who design tailored solutions to improve rig performance impacted by specific environmental conditions. Additionally, they design solutions to improve current rig design where it is not suitable for practical site conditions or is affecting efficiency or safety of assets. This ensures the optimal rig or asset configuration is used on every site to maximise productivity and safety. When required, our team work closely with OEM's to manage these upgrades and ensure they are completed within approved parameters.

FULLY EQUIPPED WORKSHOPS

We invest substantially in providing fully-equipped workshops at all our major contracts. For example, at our long-term Sukari workshop, we have installed an overhead crane with 20 tonne capacity to enable us to complete all heavy lifting required for complete rebuilds and repairs and a fully equipped machine shop with Lathes capable of retooling 10m blast rods down to small shafts and bearing bushes, milling machines and welding units. Our short-term facilities include containerised spare parts warehousing together with ample workshop facilities.



Long term maintenance infrastructure at Sukari Gold Mine, Egypt



Medium term maintenance infrastructure at North Mara Gold Mine, Tanzania



Short term maintenance infrastructure at Syama Gold Mine, Mali

MAINTENANCE CAPABILITY

Our maintenance teams support the company's delivery of a quality drilling service to our clients.

SAFETY

We have an uncompromising commitment to the occupational health and safety of our employees and others where we work. As such, we have one of the best safety records in the industry.

We expect visible safety leadership across all levels of our company, from our Executive Leadership Team to our drill crews on site and will exceed the most stringent safety requirements. Our numerous safety initiatives, training programs, policies and procedures are designed to ensure all our employees have the knowledge to conduct their work safely. Most importantly we work with our employees to ensure they understand the controls to mitigate any risk and are empowered to act if they are unsafe in their workplace or they identify an unsafe condition or behaviour.

It is our goal at every site we operate to exceed safety requirements and be a positive contributor to the safety culture at the mine. Our maintenance programs ensure all rigs are kept to the highest safety standards.

SUPPORTING LOCAL COMMUNITIES

We recognise the importance of contributing to the local communities in which we operate. We actively employ, train and promote local national labour and work to reduce expat ratios across our business. We invest substantially in training and professional development of our employees and provide the opportunity for national employees to receive internationally accredited qualifications.

In addition, we work closely with our clients to support their local community programs and other corporate social responsibility strategies.

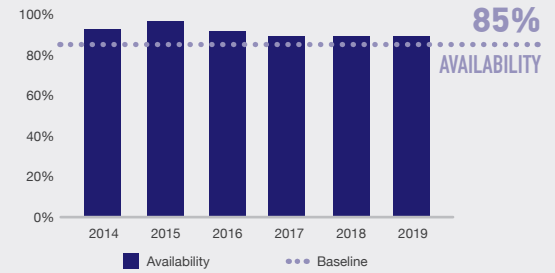
INTERNATIONAL APPRENTICESHIP PROGRAM FOR NATIONAL EMPLOYEES

We have a strong commitment to providing development opportunities for our National employees. We provide the opportunity for employees who demonstrate a strong capability and commitment within our Maintenance teams to complete their Certificate III in Engineering – Mechanical Trade at Cairns TAFE in Australia. This internationally recognized qualification provides an opportunity they may not have otherwise had in their home countries and will provide further career opportunities - not just in their home countries but across Africa and around the world.

PROFESSIONAL DELIVERY LEADERSHIP

We pride ourselves on being always looking at how we can do something better – so much so that in some cases our clients have adapted our standards as their own. We collect and analyse data to assess performance and implement continuous improvement initiatives.

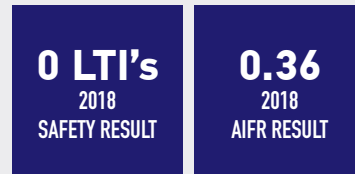
MECHANICAL AVAILABILITY HISTORY



MAINTENANCE WORKSHOPS



SAFETY ACHIEVEMENTS



OPERATIONS

Current and previous African operations

